



Code: **NTA-0-00-06**

**+** SURGICAL GUIDE KIT

*Nta Implant*

www.ntaimplant.com

**+** GUIDE - POINT DRILL Ø2.2

Code: *NTA-0-01-06*



**+** GUIDE - POINT DRILL Ø5.2

Code: *NTA-0-02-06*



**+** TISSUE PUNCH DRILL Ø4.5

Code: *NTA-0-03-06*



**+** GUIDE - ANCHOR SCREW

Code: *NTA-0-04-06*



**+** GUIDE - CORTICAL DRILL

Code: *NTA-0-05-06 Ø4.0*

Code: *NTA-0-06-06 Ø4.5*

Code: *NTA-0-07-06 Ø5.0*



**+** GUIDE - VERTICAL ANCHOR

Code: *NTA-0-08-06 0mm*

Code: *NTA-0-09-06 2mm*

Code: *NTA-0-10-06 4mm*



**+** GUIDE - ANCHOR DRILL Ø1.35

Code: *NTA-0-11-06*



**+** GUIDE - ANCHOR DRIVER

Code: *NTA-0-12-06*

HANDPIECE



**+** GUIDE - ANCHOR DRIVER

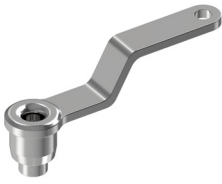
Code: *NTA-0-13-06*

MANUAL



**+** GUIDE - TUBE (HANDLE GUIDE) Ø2.2

Code: NTA-0-14-06



**+** GUIDE - BONE ROUND DRILL

Code: NTA-0-15-06 Ø3.5

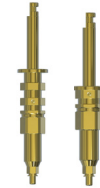
Code: NTA-0-16-06 Ø5.0



**+** GUIDE - FIXTURE DRIVER **HANDPIECE**

Narrow

Code: NTA-0-17-06 / SHORT  
Code: NTA-0-18-06 / LONG



Long Short

**+** GUIDE - FIXTURE DRIVER **HANDPIECE**

Regular

Code: NTA-0-19-06 / SHORT  
Code: NTA-0-20-06 / LONG

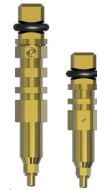


Long Short

**+** GUIDE - FIXTURE DRIVER **MANUAL**

Narrow

Code: NTA-0-21-06 / SHORT  
Code: NTA-0-22-06 / LONG



Long Short

**+** GUIDE - FIXTURE DRIVER **MANUAL**

Regular

Code: NTA-0-23-06 / SHORT  
Code: NTA-0-24-06 / LONG



Long Short

**+** GUIDE - SCREW DRIVER **HANDPIECE**

Code: NTA-0-25-06  
SHORT



**+** GUIDE - SCREW DRIVER **MANUAL**

Code: NTA-0-26-06  
SHORT



**+** GUIDE - DRILL EXT.

Code: NTA-0-28-06



**+** GUIDE - STRAIGHT TWIST DRILL Ø2.2

Code: NTA-0-29-06 L:5  
Code: NTA-0-30-06 L:7.5  
Code: NTA-0-31-06 L:8.5  
Code: NTA-0-32-06 L:10.0  
Code: NTA-0-33-06 L:11.5  
Code: NTA-0-34-06 L:13.0



**+** GUIDE - STRAIGHT TWIST DRILL Ø3.4

Code: NTA-0-35-06 L:5  
Code: NTA-0-36-06 L:7.5  
Code: NTA-0-37-06 L:8.5  
Code: NTA-0-38-06 L:10.0  
Code: NTA-0-39-06 L:11.5  
Code: NTA-0-40-06 L:13.0



**+** GUIDE - STRAIGHT TWIST DRILL Ø3.5

Code: NTA-0-41-06 L:5  
Code: NTA-0-42-06 L:7.5  
Code: NTA-0-43-06 L:8.5  
Code: NTA-0-44-06 L:10.0  
Code: NTA-0-45-06 L:11.5  
Code: NTA-0-46-06 L:13.0



**+** GUIDE - STRAIGHT TWIST DRILL Ø4.0

Code: NTA-0-47-06 L:5  
Code: NTA-0-48-06 L:7.5  
Code: NTA-0-49-06 L:8.5  
Code: NTA-0-50-06 L:10.0  
Code: NTA-0-51-06 L:11.5  
Code: NTA-0-52-06 L:13.0



**+** GUIDE - STRAIGHT TWIST DRILL Ø4.5

Code: NTA-0-53-06 L:5  
Code: NTA-0-54-06 L:7.5  
Code: NTA-0-55-06 L:8.5  
Code: NTA-0-56-06 L:10.0  
Code: NTA-0-57-06 L:11.5  
Code: NTA-0-58-06 L:13.0



**+** GUIDE - STRAIGHT TWIST DRILL Ø5.0

Code: NTA-0-59-06 L:5  
Code: NTA-0-60-06 L:7.5  
Code: NTA-0-61-06 L:8.5  
Code: NTA-0-62-06 L:10.0  
Code: NTA-0-63-06 L:11.5  
Code: NTA-0-64-06 L:13.0



**+** GUIDE - TORQUE WRENCH

Code: NTA-0-27-06

